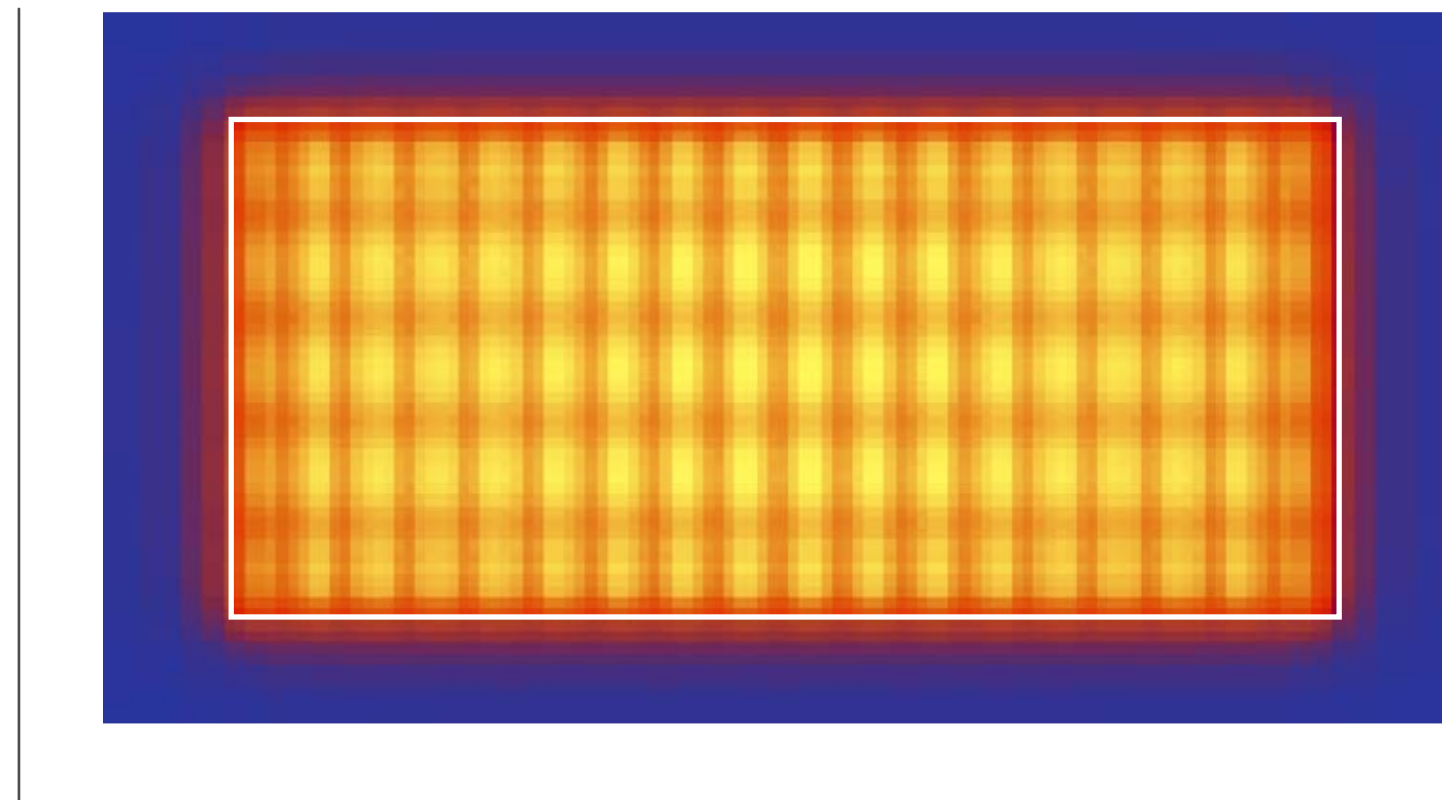


**44' x 28' ROOM**  
4' x 4' CANOPY

Average  
1431  $\mu\text{mol}/\text{m}^2/\text{s}$

Maximum  
1565  $\mu\text{mol}/\text{m}^2/\text{s}$

Minimum  
1298  $\mu\text{mol}/\text{m}^2/\text{s}$

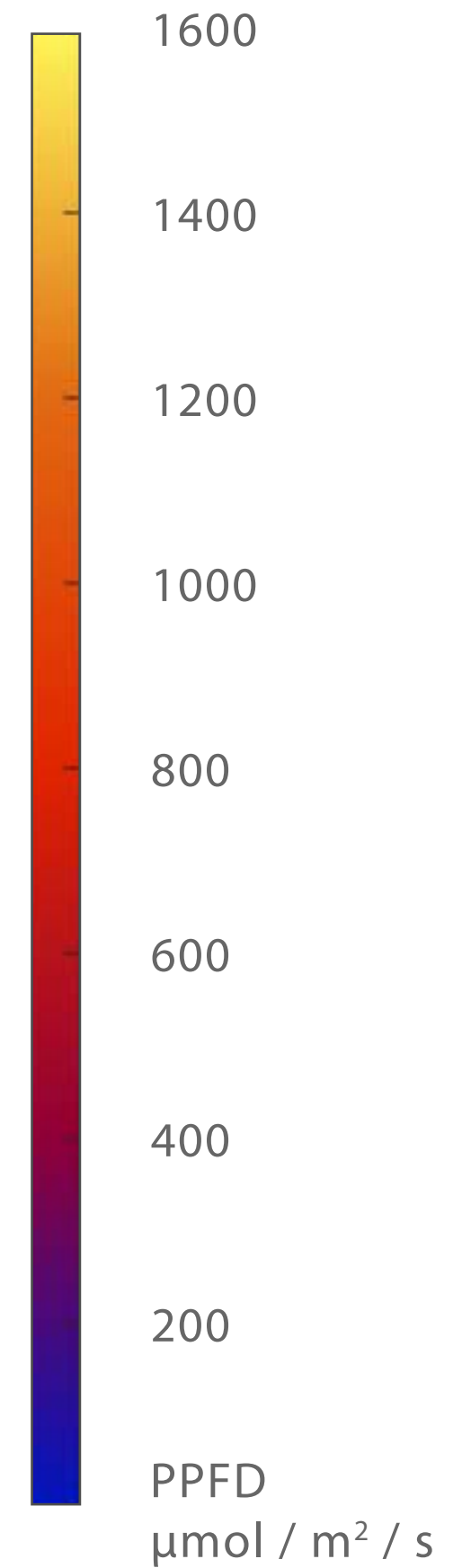
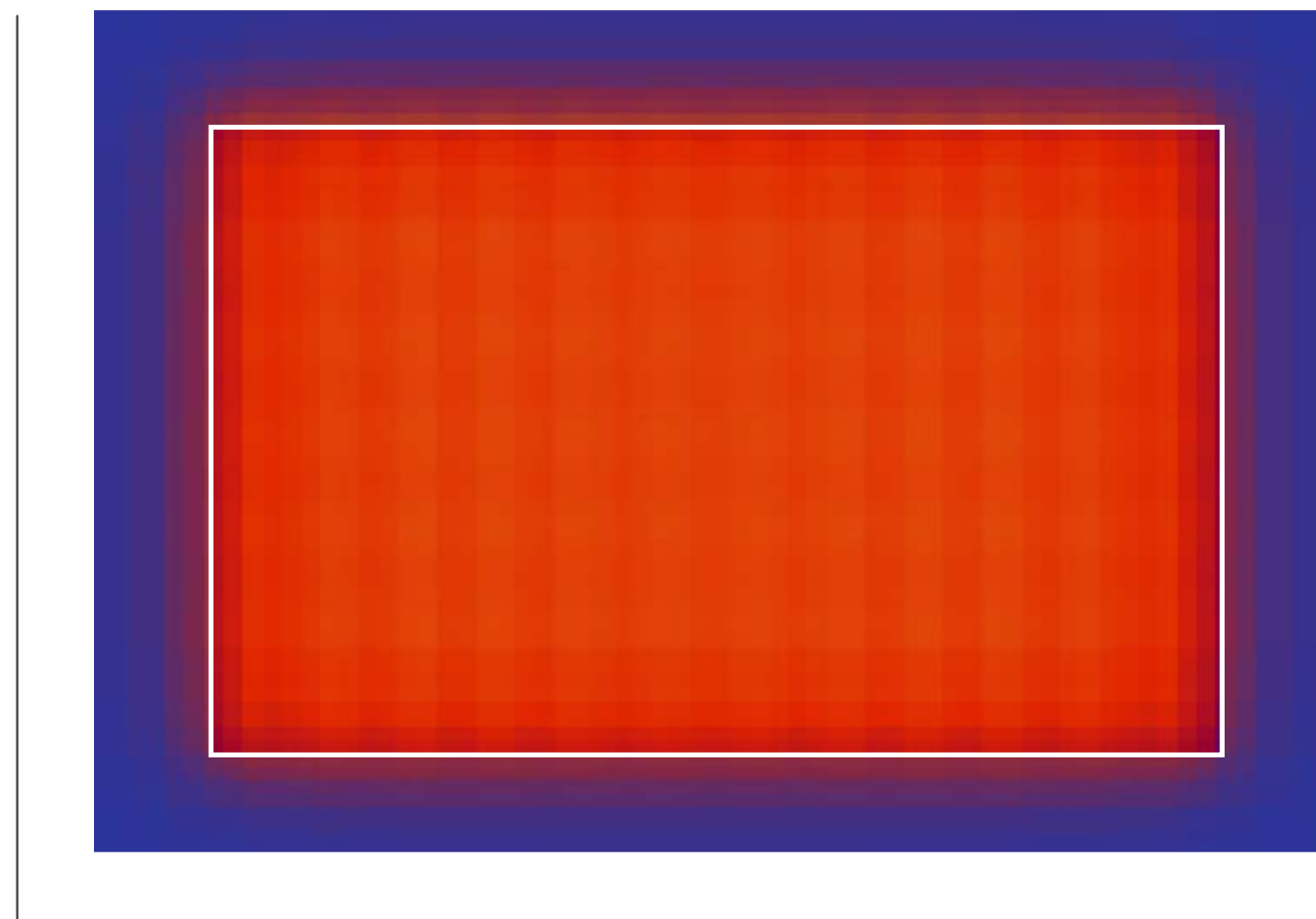


**44' x 36' ROOM**  
4' x 6' CANOPY

Average  
961  $\mu\text{mol}/\text{m}^2/\text{s}$

Maximum  
1015  $\mu\text{mol}/\text{m}^2/\text{s}$

Minimum  
904  $\mu\text{mol}/\text{m}^2/\text{s}$



44' x 28' room  
4' x 4' canopy

Environment

44'x28' indoor facility with rolling tables. 4' egress at entrance and exit of room totalling 720 square feet of canopy.

Measurement density

Measurements taken at center point of every 6" square segment. Model based on recommended mounting height of 18" above canopy.

Total fixture count

Two VYPRx PLUS systems per 16 square feet of canopy. 90 total fixtures.

44' x 36' room  
4' x 6' canopy

Environment

44'x36' indoor facility with rolling tables. 4' egress at entrance and 3' egress at exit of room totalling 1,080 square feet of canopy.

Measurement density

Measurements taken at center point of every 6" square segment. Model based on recommended mounting height of 30" above canopy.

Total fixture count

Two VYPRx PLUS systems per 25.71 square feet of canopy. 84 total fixtures.